

Item No. 10.	Classification: Open	Date: 22 September 2010	Meeting Name: Corporate Parenting Committee
Report title:		Children Looked After: Final End of year 2009/10 Performance Monitoring Report	
Ward(s) or groups affected:		All	
From:		Strategic Director of Children's Services	

RECOMMENDATION(S)

- 1 That the committee note this report, and endorse the measures adopted to address performance in relation to long-term stability.

BACKGROUND INFORMATION

- 2 Services for Children Looked After (CLA) are monitored through a series of national and local performance indicators.
- 3 This information is monitored on a monthly basis at senior management meetings. Summary information is monitored by the Young Southwark Executive.
- 4 These figures reflect Southwark's final 2009/10 end of year position submitted to Department of Education (DfE). End of year results are expected to be published end September 2010 by the DfE where an end of year benchmarking report will be made available. For the purposes of this report end of year 2008/09 comparators are used to benchmark. There were no significant changes to performance from the previous provisional report (June 2010).
- 5 Amendment to NI 101 – clarification of calculation leading to a change in the figure

Particular Success

- 6 The length of placements for children looked after has improved over the last 12 months. End of year 2009/10 figures bring us above end of year 2008/09 national, London and statistical neighbour averages (NI 63).

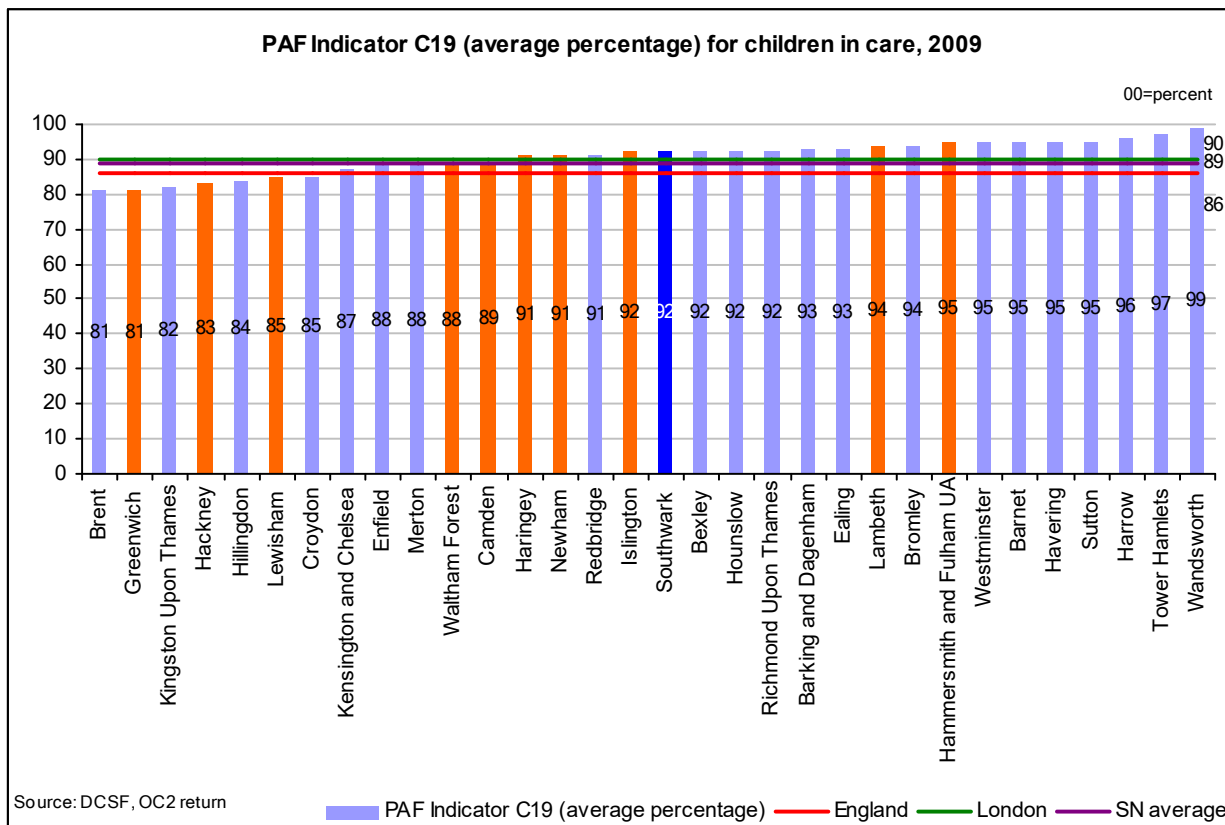
Areas of Development

- 7 The proportion of care leavers in education, employment or training has slightly decreased over the 12 month period. End of year figures are below end of year 2008/09 national, London and statistical neighbour averages (NI 148).
- 8 Children looked after with 3 or more placements has remained in line with last years end of year figures. However, performance is still below end of year 2008/09 national, London and statistical neighbour averages (NI 62).

Summary End of year 2010 Indicator Set – Be Healthy

- 9 CYPP 11 – Health of children looked after

The majority (91.9 per cent) of children that were looked after as at 30 September 2009 for at least 12 months had their dentist and health assessments. This is in line with last year (91.3 per cent) and is above national (85.9 per cent) and statistical neighbour (88.9 per cent) averages.



10 NI 58 – Emotional and behavioural health of children in care

The average score on the Strengths and Difficulties Questionnaire (SDQ) for children aged 4 to 16 who been looked after continuously for at least 12 months as at 31 March 2010 was 12.1. This indicator is calculated as the average score for children with a completed SDQ, however these were completed for a small proportion of the eligible cohort. Our performance is in line with end of year 2008/09 national, London and statistical neighbours.

Summary End of year 2010 Indicator Set – Other Outcomes

11 Children looked after as at 31 March 2010

End of year 2009/10 shows a 4.1% increase in the number of children looked after over the last 12 months (557 compared to 535 children looked after).

In 2008/09 Southwark had the 5th highest number of children looked after in London and was in the top quartile nationally for high numbers of children looked after.

12 NI 61 – Timeliness of placements of looked after children for adoption following an agency decision that the child should be placed for adoption

Performance has declined for the proportion of children who were adopted during the year and placed for adoption within 12 months of the decision that they should be place for adoption. However, we remain above end of year 2008/09 national, London and statistical neighbour averages.

13 NI 62 – Children looked after with 3 or more placements

Final end of year data shows that performance is in line with end of year 2008/09. However, performance is lower than end of year 2008/09 national, London and statistical neighbour

averages.

In 2008/09 Southwark was ranked 24th out of 32 London boroughs for performance and was in the bottom quartile nationally.

14 NI 63 – Long term stability of looked after children: length of placements

As a recommendation from JAR there was a significant amount of energy and work over the last 24 months put into improving this area and final end of year data shows the success Southwark have made with an increase in the long term stability of placements. This brings us above end of year 2008/09 national, London and statistical neighbour averages.

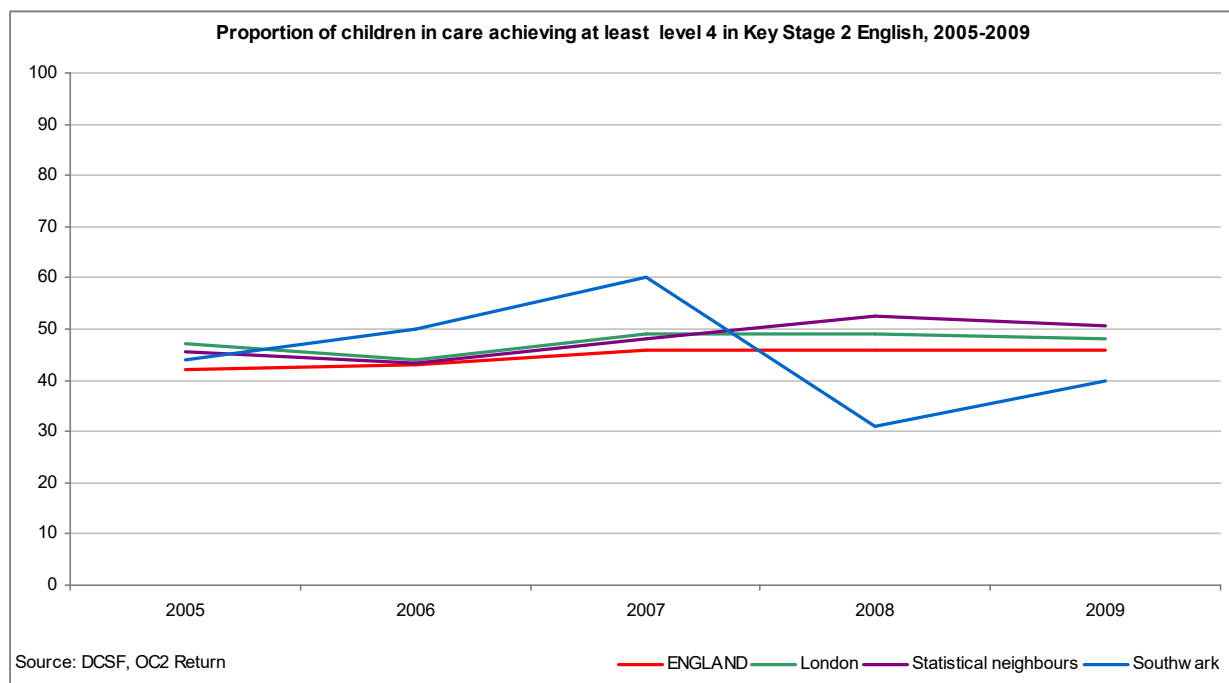
In 2008/09 Southwark was ranked 20th out of 32 London boroughs and was in the 2nd quartile nationally for high performance.

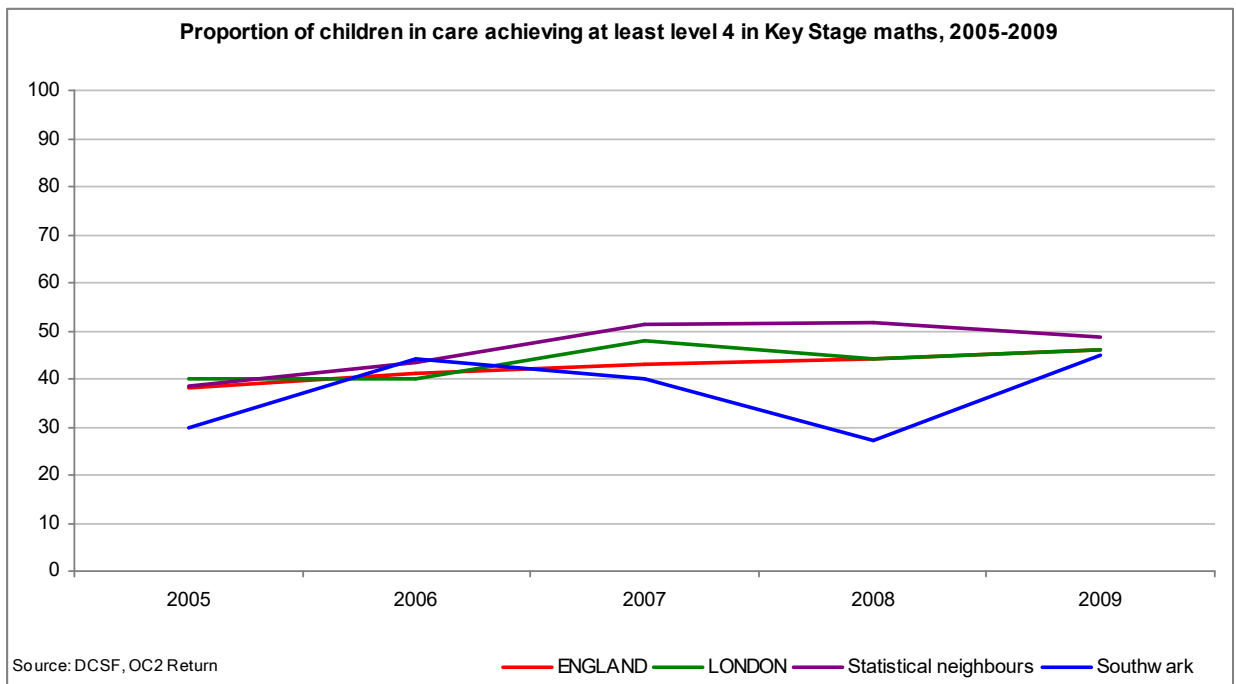
15 NI 66 – Looked after children cases which were reviewed within required timescales

92.8 per cent of children had their cases reviewed within the required timescales during 2010. This is a slight decrease compared to last year and we remain in line with end of year 2008/09 national, London and statistical neighbour averages.

16 NI 99 / 100 – Children in care reaching level 4 in English / maths at Key Stage 2

2009 results have shown an improvement in the proportion of children achieving the expected levels at Key Stage 2 (from 30.8 per cent to 40.0 per cent in English and 26.9 per cent to 45.0 per cent in maths). This is below the national (46 per cent), London (48 per cent) and statistical neighbour (50.7 per cent) averages for English but achievement in maths is in line with national and London averages (both 46 per cent).





17 NI 101 – Children in care achieving 5 A*-C GCSEs (or equivalent) at Key Stage 4 including English and Maths)

Key Stage 4 results in 2009 showed 13 per cent of children in care obtained at least 5 A* to C grades including English and mathematics at GCSE or equivalent. This was higher than the national average (9.8 per cent) and in line with London (13.1 per cent).

18 NI 148 – % of care leavers in education, employment or training

Final data shows care leavers in education, employment or training has slightly decreased over the 12 month period and is below end of year 2008/09 national, London and statistical neighbour averages. A good strategy is in place and is targeting support to those most vulnerable to not being in education, employment or training (NEET) so we are expecting future improvements.

In 2008/09 Southwark had the 13th lowest proportion out of the 33 London boroughs and was in the 3rd quartile nationally.

19 NI 147 – % of care leavers at age 19 in suitable accommodation

Performance for end of year 2009/10 remains high with the majority of care leavers at age 19 in suitable accommodation. Final figures show performance remains above end of year 2008/09 national, London and statistical neighbour averages.

In 2008/09 Southwark had the 5th highest proportion out of the 32 London boroughs and was in the top quartile nationally for high performance.

Policy Implications

20 This decision has been judged to have no policy implications.

Community Impact Statement

21 The decision to note this performance report has been judged to have no or a very small impact on local people and communities. Clearly the quality of these services has a big impact on children looked after from all communities.

Resource Implications

22 This decision has no resource implications.

Consultation

23 The management teams of Children's Safeguarding and Specialist Services have discussed the indicators set out in this report.

BACKGROUND DOCUMENTS

Background Papers	Held At	Contact
General guidance on performance indicators	Department for Education website	

APPENDICES

No.	Title
Appendix 1	Performance Indicators table

AUDIT TRAIL

Lead Officer	Rory Patterson	
Report Author	Monika Ciurej / Gwen Sinnott	
Version	Final	
Dated	13 September 2010	
Key Decision?	No	
CONSULTATION WITH OTHER OFFICERS / DIRECTORATES / CABINET MEMBER		
Officer Title	Comments Sought	Comments included
Strategic Director of Communities, Law & Governance	No	No
Finance Director	No	No
Cabinet Member	Yes	No
Date final report sent to Constitutional Officer	13 September 2010	